



38 Eastwood Drive
Suite 301
South Burlington, VT 05403
802.655.5020

wla-vt.com

OWNER TITLE
TOWN OF WARREN
ATTN: REBECCA CAMPBELL
42 CEMETERY ROAD
WARREN, VT 05674
802-496-2709

ARCHITECT
WIEMANN LAMPHERE ARCHITECTS
ATTN: STEVEN KOY
38 EASTWOOD, SUITE 301
SOUTH BURLINGTON, VT 05403
802-655-5020

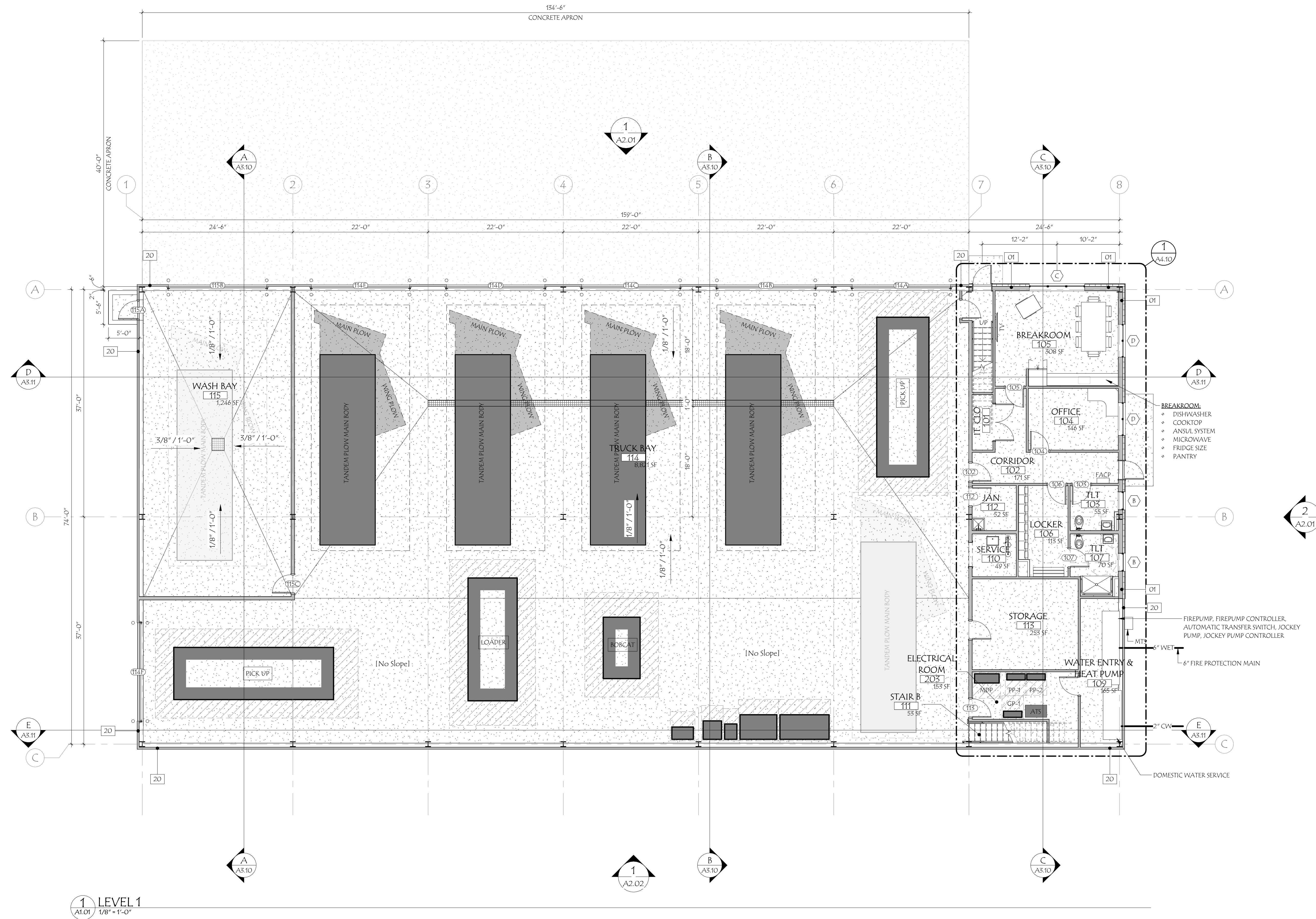
CIVIL ENGINEER AND LANDSCAPE
VANASSE HANGEN BRUSTLIN, INC.
ATTN: DANIEL HEIL
40 IDX DRIVE, BUILDING 100, SUITE 200
SOUTH BURLINGTON, VT 05403
802-497-6100

STRUCTURAL ENGINEER
HARDY STRUCTURAL ENGINEERING, LLC.
ATTN: TIM HARDY
875 ROOSEVELT HIGHWAY, SUITE 130
COLCHESTER, VT 05446
802-655-0755

MECHANICAL ENGINEER
CONSULTING ENGINEERING SERVICES
ATTN: BRADLEY PARK
811 MIDDLE STREET
MIDDLETOWN, CT 06457
860-532-1682

PLUMBING ENGINEER
CONSULTING ENGINEERING SERVICES
ATTN: BRADLEY PARK
811 MIDDLE STREET
MIDDLETOWN, CT 06457
860-532-1682

ELECTRICAL ENGINEER
CONSULTING ENGINEERING SERVICES
ATTN: CURTIS CHASE
811 MIDDLE STREET
MIDDLETOWN, CT 06457
860-532-1682



1 LEVEL 1
A1.01 / 1/8" = 1'-0"

#	DATE	REVISION DESCRIPTION

HIGHWAY GARAGE

WARREN, VERMONT

FLOOR PLAN

PROJECT NO:	2024046
DATE:	TBD - ONGOING
CHECKED BY:	SWR
DRAWN BY:	JPL
SCALE:	1/8" = 1'-0"

A1.01



38 Eastwood Drive
Suite 301
South Burlington, VT 05403
802.655.5020

wla-vt.com

OWNER TITLE
TOWN OF WARREN
ATTN: REBECCA CAMPBELL
42 CEMETERY ROAD
WARREN, VT 05674
802-496-2709

ARCHITECT
WIEMANN LAMPHERE ARCHITECTS
ATTN: STEVEN KOY
38 EASTWOOD, SUITE 301
SOUTH BURLINGTON, VT 05403
802-655-5020

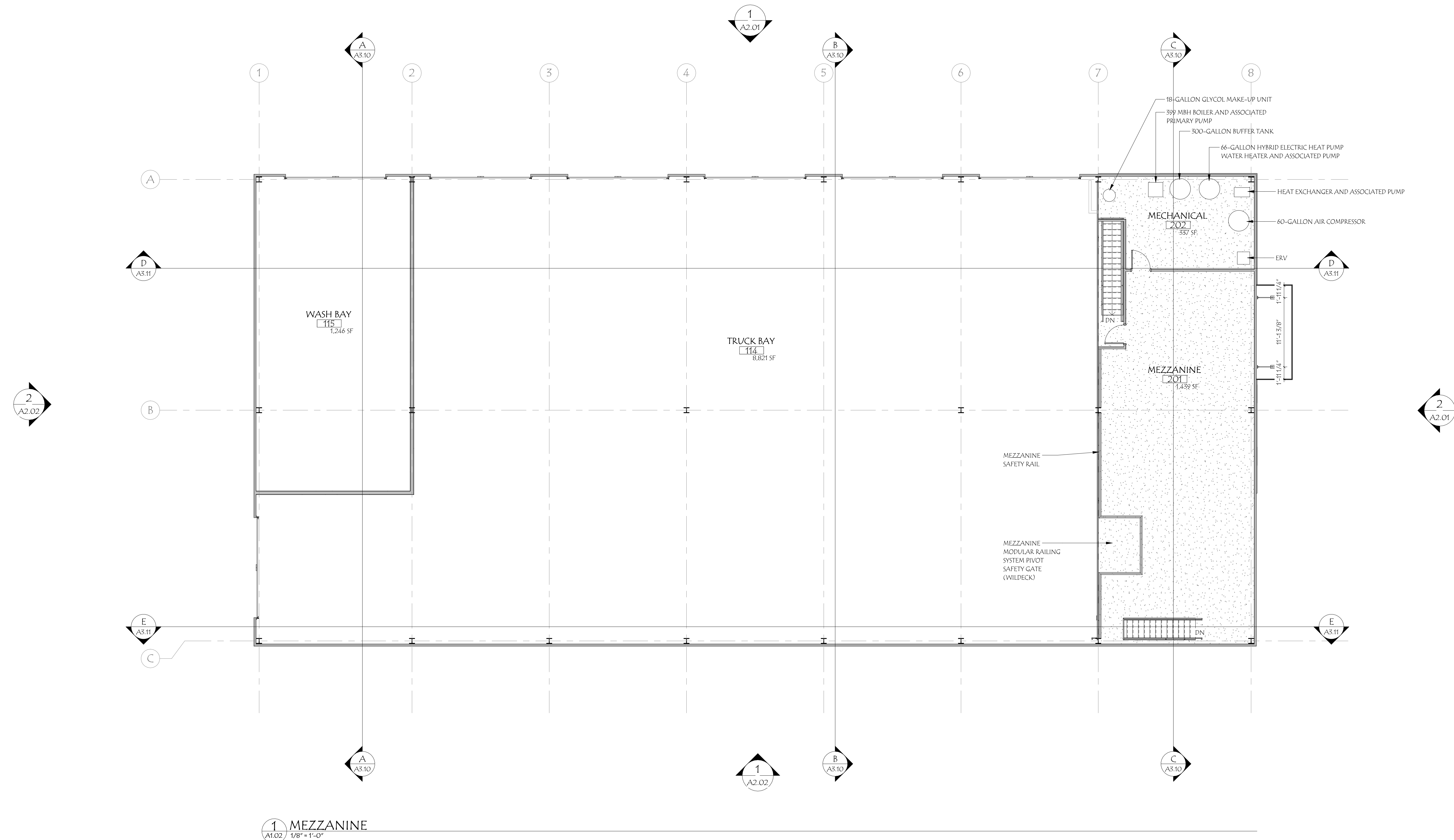
CIVIL ENGINEER AND LANDSCAPE
VANASSE HANGEN BRUSTLIN, INC.
ATTN: DANIEL HEIL
40 IDX DRIVE, BUILDING 100, SUITE 200
SOUTH BURLINGTON, VT 05403
802-497-6100

STRUCTURAL ENGINEER
HARDY STRUCTURAL ENGINEERING, ILL.
ATTN: TIM HARDY
875 ROOSEVELT HIGHWAY, SUITE 130
COLCHESTER, VT 05446
802-655-0755

MECHANICAL ENGINEER
CONSULTING ENGINEERING SERVICES
ATTN: BRADLEY PARK
811 MIDDLE STREET
MIDDLETOWN, CT 06457
860-532-1682

PLUMBING ENGINEER
CONSULTING ENGINEERING SERVICES
ATTN: BRADLEY PARK
811 MIDDLE STREET
MIDDLETOWN, CT 06457
860-532-1682

ELECTRICAL ENGINEER
CONSULTING ENGINEERING SERVICES
ATTN: CURTIS CHASE
811 MIDDLE STREET
MIDDLETOWN, CT 06457
860-532-1682



1 MEZZANINE
1/8" = 1'-0"

#	DATE	REVISION DESCRIPTION

HIGHWAY GARAGE

WARREN, VERMONT

MEZZANINE PLAN

PROJECT NO.	2024046
DATE:	TBD - ONGOING
CHECKED BY:	SWR
DRAWN BY:	JPL
SCALE:	1/8" = 1'-0"

A1.02



38 Eastwood Drive
Suite 301
South Burlington, VT 05403
802.655.5020

wla-vt.com

OWNER TITLE
TOWN OF WARREN
ATTN: REBECCA CAMPBELL
42 CEMETERY ROAD
WARREN, VT 05674
802-496-2709

ARCHITECT
WIEMANN LAMPHERE ARCHITECTS
ATTN: STEVEN KOY
38 EASTWOOD, SUITE 301
SOUTH BURLINGTON, VT 05403
802-655-5020

CIVIL ENGINEER AND LANDSCAPE
VANASSE HANGEN BRUSTLIN, INC.
ATTN: DANIEL HEIL
40 IDX DRIVE, BUILDING 100, SUITE 200
SOUTH BURLINGTON, VT 05403
802-497-6100

STRUCTURAL ENGINEER
HARDY STRUCTURAL ENGINEERING, LLC.
ATTN: TIM HARDY
875 ROOSEVELT HIGHWAY, SUITE 130
COLCHESTER, VT 05446
802-655-0755

MECHANICAL ENGINEER
CONSULTING ENGINEERING SERVICES
ATTN: BRADLEY PARK
811 MIDDLE STREET
MIDDLETOWN, CT 06457
860-532-1682

PLUMBING ENGINEER
CONSULTING ENGINEERING SERVICES
ATTN: BRADLEY PARK
811 MIDDLE STREET
MIDDLETOWN, CT 06457
860-532-1682

ELECTRICAL ENGINEER
CONSULTING ENGINEERING SERVICES
ATTN: CURTIS CHASE
811 MIDDLE STREET
MIDDLETOWN, CT 06457
860-532-1682



1 NORTH EAST
A2.00



2 NORTH WEST
A2.00

#	DATE	REVISION DESCRIPTION

HIGHWAY GARAGE

WARREN, VERMONT



EXTERIOR PERSPECTIVES

PROJECT NO:	2024046
DATE:	TBD - ONGOING
CHECKED BY:	Checker
DRAWN BY:	Author
SCALE:	

A2.00